

# HATCH WEATHER COVERS - HWC451 SERIES

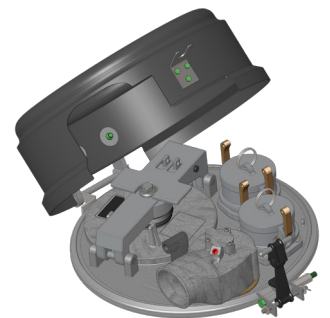
Liquip's hatch weather covers mount onto the manhole and protect against the ingress of water into compartments and deter unauthorised access to the compartment hatches.

## Key Features

- Composite Anti Static material.
- Complies with AS2809:2020.
- Australian double drop tested.
- Simple stainless steel split pins allow for easy removal for maintenance.
- Quick release rubber clamp allows for quick opening and closing of the cover.
- Cover has a cut out for the vapour vent (AVV vent) to connect to the vapour coaming.
- Compatible with the VOH451 series of hatches.



HWC451 Hatch Weather Cover shown



HWC451C shown on VOH451 series hatch

## Technical Information

<b>Mounting</b>	HWC451 has an integrated clamband which replaces the standard clamband to secure the VOH hatch.
<b>Materials</b>	Cover - Composite Anti Static material. Clamband & fasteners - Zinc plated mild steel. Hinge bracket on cover - Cast aluminium.
<b>Weight</b>	3.8 kg
<b>Operation</b>	Liquip hatch weather covers are hinged on one end with an over-centre rubber clamp latch on the opposite end.  To allow full access to the hatch cover, unhook the clamp and lift the cover
<b>Adjustment or Service</b>	Latching end is self-centring.

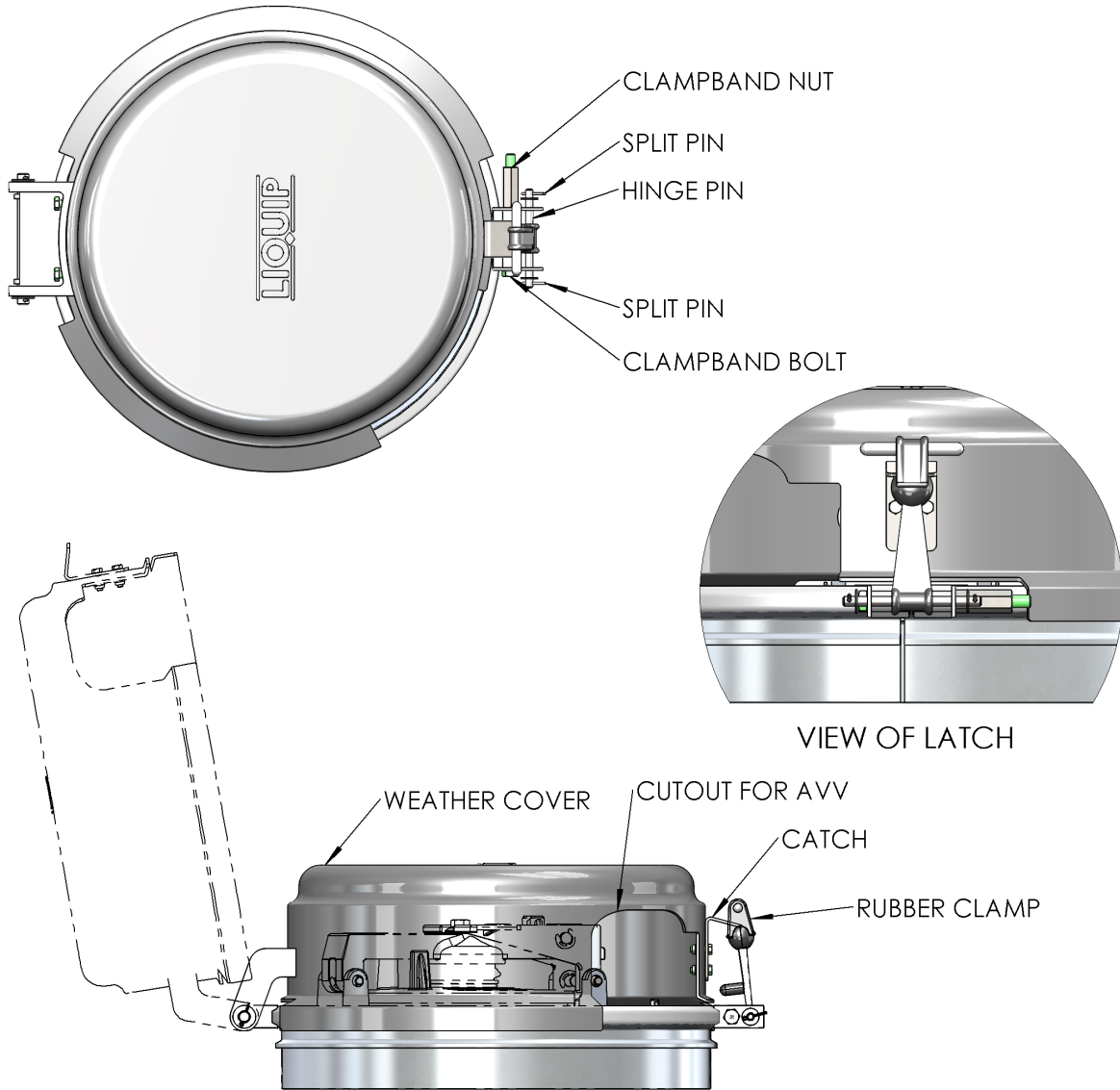
## Ordering Information

Item	Description
HWC451	Hatch Weather Cover Assembly suit VOH451 without AVV cut out.
HWC451C	Hatch Weather Cover Assembly suit VOH451 with AVV cut out.

## Associated Equipment

Item	Description
VOH4516A8N0	Aluminium 450mm manhole cover assembly (metric thread).

# FITTING HATCH WEATHER COVER



## INSTRUCTIONS

1. PLACE HATCH AND SEAL ONTO COAMING IF NOT ALREADY IN PLACE
2. FIT CLAMPBAND BY HINGING BACK OR TEMPORARILY REMOVING THE WEATHER COVER
3. ENSURE THE CLAMPBAND FITS CORRECTLY OVER THE HATCH & COAMING SUCH THAT THEIR OUTSIDE DIAMETERS ARE WITHIN CLAMPBAND PROFILE
4. CONFIRM LOCATION OF HINGE AND CUT-OUT FOR VAPOUR VENT ENSURING THE COVER DOES NOT INTERFERE WITH THE HATCH
5. CHECK THAT THE CLAMP BRACKET IS FITTED EITHER SIDE OF THE CLAMPBAND LUGS THEN FIT & GRADUALLY TIGHTEN BOLT AND NUT TO 27-34NM, (20-25FTLB) WHILE TAPPING AROUND THE CLAMPBAND CIRCUMFERENCE WITH A SOFT HAMMER TO ENSURE IT IS BEDDED AND FITTED CORRECTLY
6. REFIT THE WEATHER COVER TO HINGE IF IT WAS REMOVED WHEN FITTING THE CLAMPBAND
7. FIT HINGE PIN WITH RUBBER CLAMP THROUGH THE HOLE IN THE CLAMP BRACKET THAT IS HELD IN PLACE BY CLAMPBAND BOLT & NUT & RETAIN WITH SPLIT PINS
8. CLOSE HATCH WEATHER COVER OVER HATCH AND STRETCH RUBBER CLAMP OVER CATCH TO COMPLETE FITTING

METERS - VALVES - VENTS - MANHOLES - HOSEREELS - OVERFILL PROTECTION - LOADING ARMS - ELECTRONIC DIPSTICKS